



Total Solution Provider in Saw Device

SA160FD

160.0 MHz Bandpass Filter

1.26 MHz Bandwidth

Revision 1: 29. Oct. 2007



- Electrical Characteristics
 - Package Dimensions
 - Testing Environment
 - Frequency Characteristics
-

SAWNICS Inc.

460 Cheonheung-ri, Seonggeo-eup, Cheonan-si, Chungcheongnam-do, 330-836 / Korea.
Tel: +82 41 550 9372 / Fax: +82 41 550 9399 / www.sawnics.com

□ Electrical Characteristics

Maximum Ratings

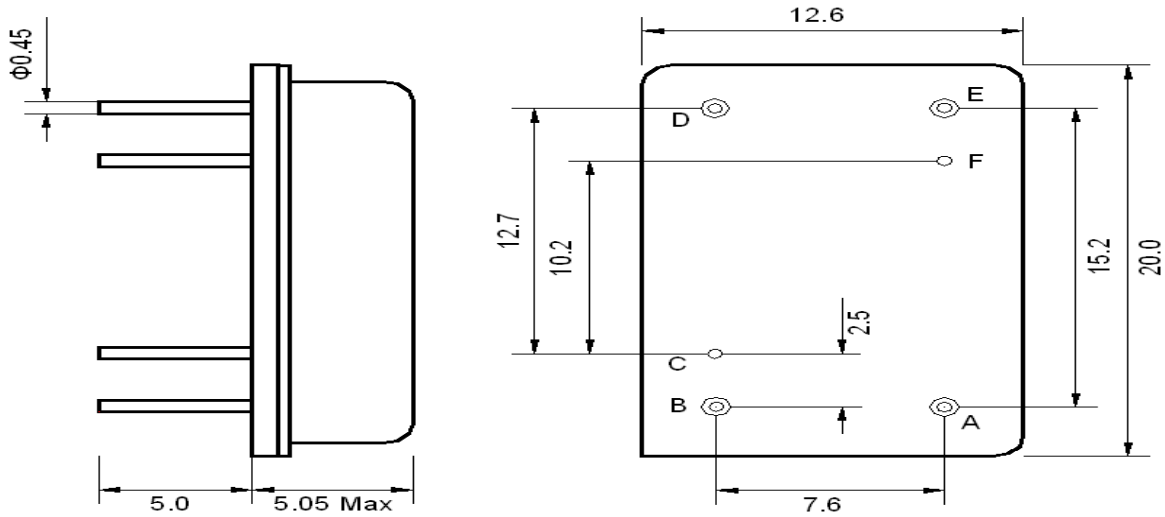
Parameters Description	Unit	Minimum	Typical	Maximum
Operation Temperature Range	°C	-40	-	85
Storage Temperature Range	°C	-60	-	85
Maximum DC Voltage	V	-	-	10
Maximum Input Power	dBm	-	-	10
Source Impedance (single ended) ⁽¹⁾	Ω	-	50	-
Load Impedance (single ended) ⁽¹⁾	Ω	-	50	-
Package type & size	D			
Length x Width	mm ²	-	20.0 x 12.6	-
Height	mm	-	-	5.05

Electrical Specification

Parameters Description	Unit	Minimum	Typical	Maximum
Center Frequency (Fo)	MHz	159.90	160.0	160.10
Insertion Loss at Fo	dB	-	19.0	22.0
Group Delay Variation (Fo±0.63MHz)	nsec	-	180	300
Absolute Delay at Fo	usec	-	2.5	-
Passband Ripple Variation (Fo±0.5MHz)	dB	-	0.6	1.0
Bandwidth at -1.5dB	MHz	1.26	1.35	-
Bandwidth at -3dB	MHz	1.40	1.50	-
Bandwidth at -35dB	MHz	-	2.25	2.40
Bandwidth at -50dB	MHz	-	2.38	2.50
Rejection (162~167MHz)	dB	50	55	-
Ultimate Rejection (Fo-9MHz~Fo-2MHz, Fo+2MHz~Fo+9MHz)	dB	50	55	-
Substrate Material		-	LN	-
Ambient Temperature	°C	-	25	-

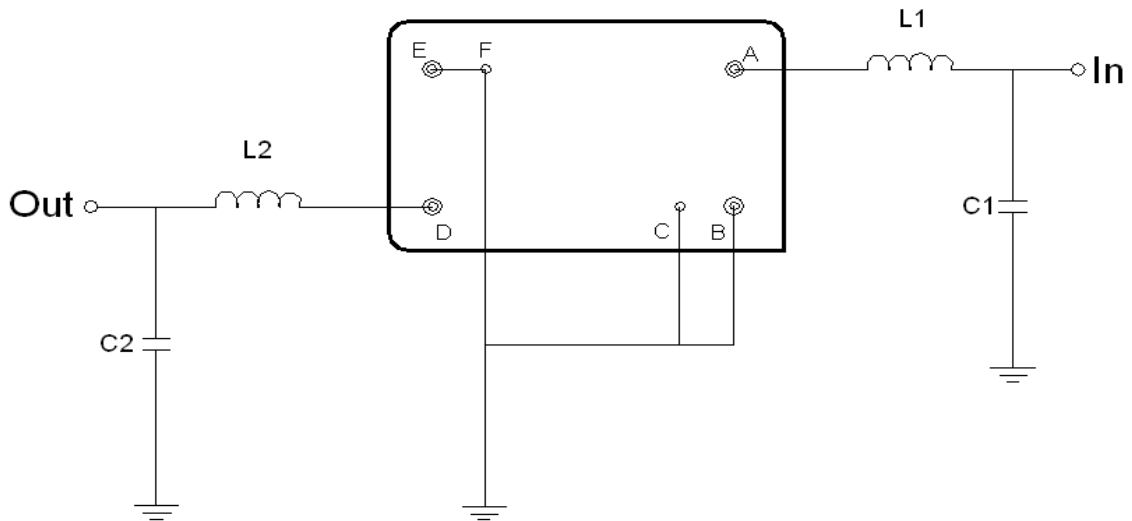
Notes : (1) With Matching Network (Ref. Testing Environment Circuit as shown below).
Those impedances could be modified with different impedance values and/or structures, if necessary.

Package Dimensions



Pin Description	
B, C, E, F	Ground
A	Input
D	Output

Testing Environment



Test Fixture & Values	
Input	L1 = 56 nH, C1 = 30 pF
Output	L2 = 56 nH, C2 = 15 pF
Source/Load Impedance	50 Ω

□ Frequency Characteristics

Frequency Response

